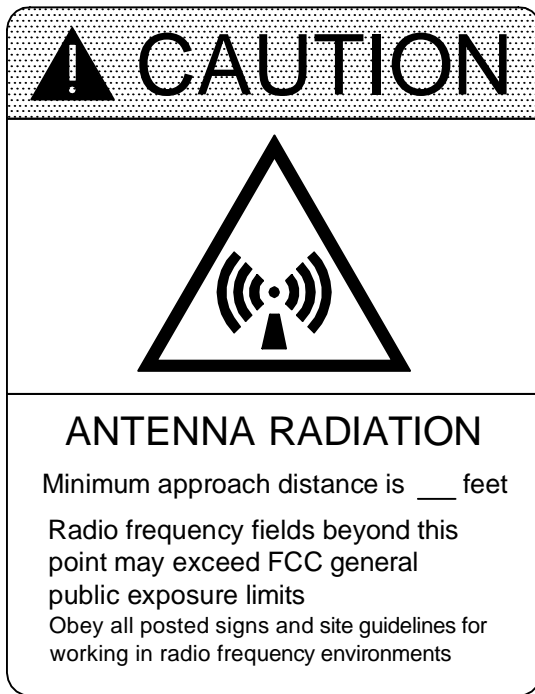


NOTES:

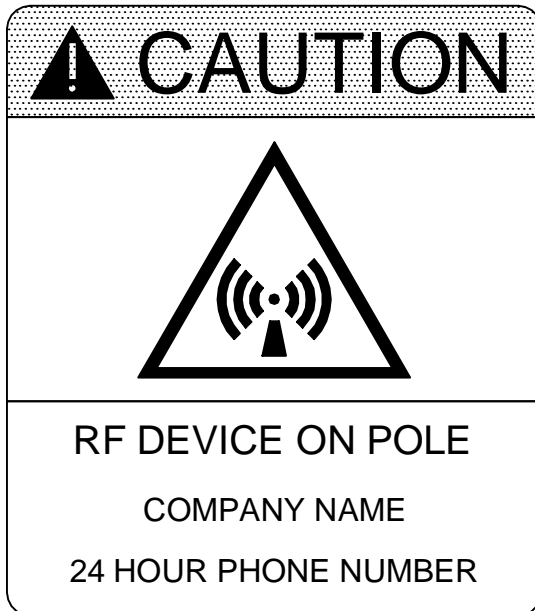
1. Drawing only applies if streetlight conductor is completely enclosed within pole and streetlight bracket.
2. Company to provide connection at pedestal at Customer's expense. Any additional necessary changes to Company's facilities to be performed by Company at Customer's expense.
3. Wi-Fi antenna, service conductor, fuse or circuit breaker, conduit, 24" minimum - 48" maximum aluminum streetlight bracket, and RF Caution signs to be provided and installed by Customer.
4. Two (2) RF Caution Signs, meeting IEEE C95.2, must be installed on Wi-Fi equipped poles. One sign shall be installed just under the Wi-Fi unit. The second sign shall be installed near the base of the pole with the top of the sign at a minimum of fifty-four (54) inches from ground level. See drawing OH-JU-COM002 for sign design.
5. Antenna and mounting bracket to be mounted on opposite side of from streetlight.
6. All Wi-Fi equipment (including antenna) shall maintain a minimum of forty (40) inches of separation below all Company conductors, including drip loops.
7. All Wi-Fi antennas and associated peripheral devices (directional antennas, security cameras, etc.) shall be mounted on a single 24' minimum - 48" maximum aluminum streetlight bracket comparable to Company stock code EN000354 or EN013774.
8. For non-wood poles, stainless steel banding shall be used to attach Wi-Fi antenna and conduit.
9. Antenna service conductor shall be installed in Schedule 80 PVC conduit (two (2) inch maximum diameter). Conduit straps should be installed at top and bottom of every conduit installation and every five (5) feet if conduit length is longer than ten (10) feet.
10. Meter socket requirement to be determined by Authorities having jurisdiction. If applicable, Customer to provide 100A meter base to accept 120/240v 3 wire service at this location. Customer to supply conduit and service conductor from point of attachment to meter base.
11. See drawing OH-JU-COM005 (Wireless Antenna Attachment Requirements) for additional notes.

ENERGY SERVICES INC.	
WI-FI CONNECTION ON ENCLOSED STREETLIGHT POLE	
APPROVED BY: JRH	DATE: 03-05-07
CHECKED BY: CRG	SCALE: NONE
DRAWN BY: DAT	CEA NO. 00000
No. OH-JU-COM001	
Entergy	
PLOT 1=32	SH. 1 OF 1

NO.	DATE:	REVISION	BY:	APPR:
3	12/14/16	General review and updates on drawing.	ERG	JRH
2	2/17/15	Revise drawing numbers and references.	KJM	JRH
1	5/31/07	Added 48" maximum for streetlight bracket in notes 3 & 7 & on bracket	DAT	JRH



Upper Sign



Lower Sign

ELECTROMARK - ES2033

SIGN: CAUTION ANTENNA RADIATION
 .024" Curved Aluminum; 14" X 10", Yellow and Black copy on a White background. Four (4) slots for banding. Sign shall be preformed by the manufacturer to conform to the curvature of a utility pole for easy installation.
 5 WEEK LEADTIME
 NET 30
 SHIP - PREPAY AND ADD: BEST WAY GROUND

ELECTROMARK - ES2032


SIGN: CAUTION RF DEVICE ON POLE
 .024" Curved Aluminum; 14" X 10", Yellow and Black copy on a White background. Four (4) slots for banding. Sign shall be preformed by the manufacturer to conform to the curvature of a utility pole for easy installation.
 5 WEEK LEADTIME
 NET 30
 SHIP - PREPAY AND ADD: BEST WAY GROUND

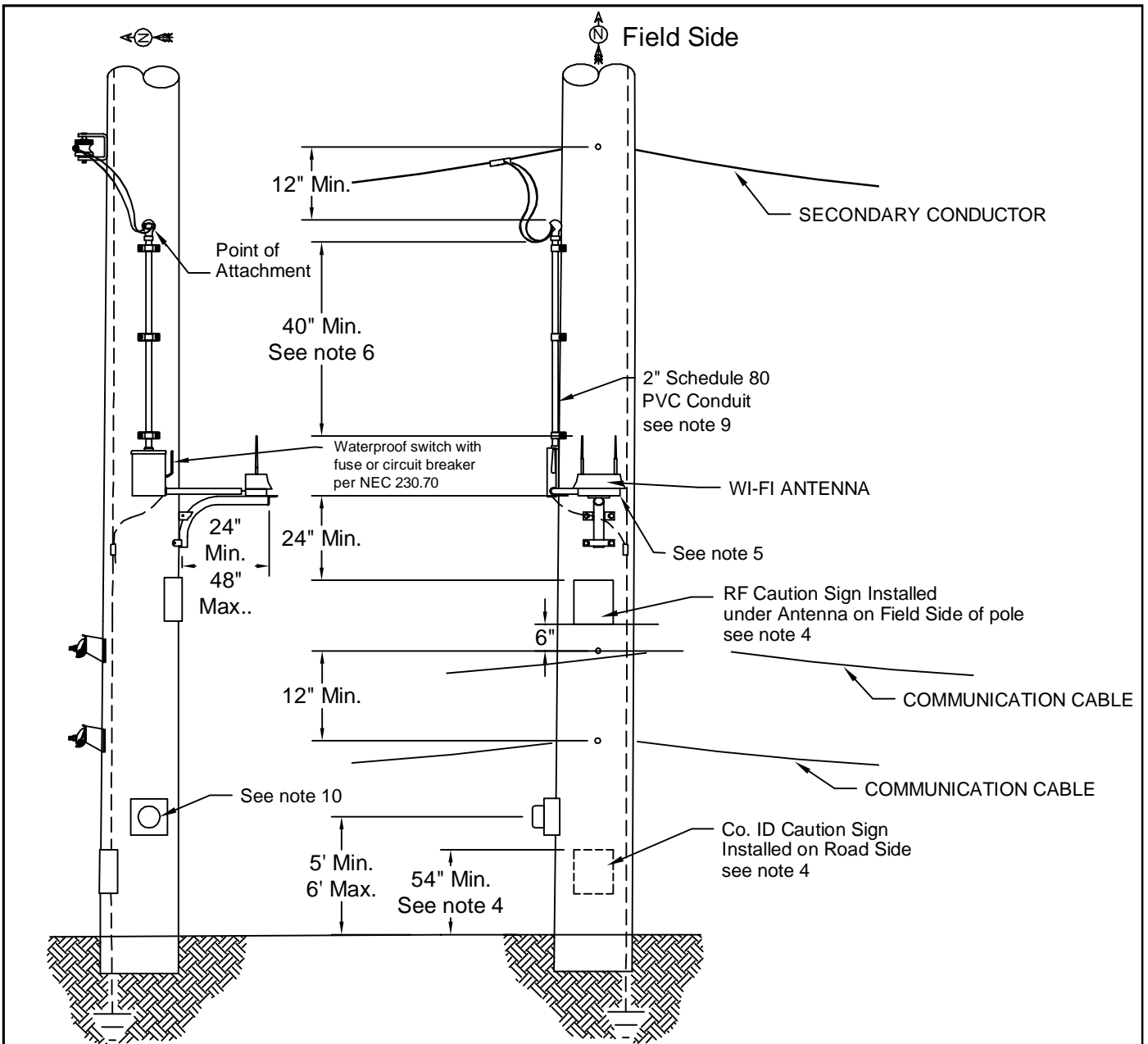
To order contact Kate Keenan, customer service representative
 1-800-295-8247 or 315-594-8085, x254

NOTE:

1. Signs must meet IEEE Standard C95.2 requirements.
2. WI-FI Customer to specify approach distance information for sign.

3	12/14/16	General review and updates on drawing.	ERG	JRH
2	2/17/15	Revised drawing numbers and references.	KJM	JRH
1	5/31/07	Added note 3	DAT	JRH
NO.	DATE:	REVISION	BY:	APPR:

ENTERGY SERVICES INC.	
CAUTION SIGNS FOR WI-FI EQUIPPED POLES	
APPROVED BY: JRH	DATE: 03-05-07
CHECKED BY: CRG	SCALE: NONE
DRAWN BY: DAT	CEA NO. 00000
No. OH-JU-COM002	
	
PLOT 1=32	SH. 1 OF 1

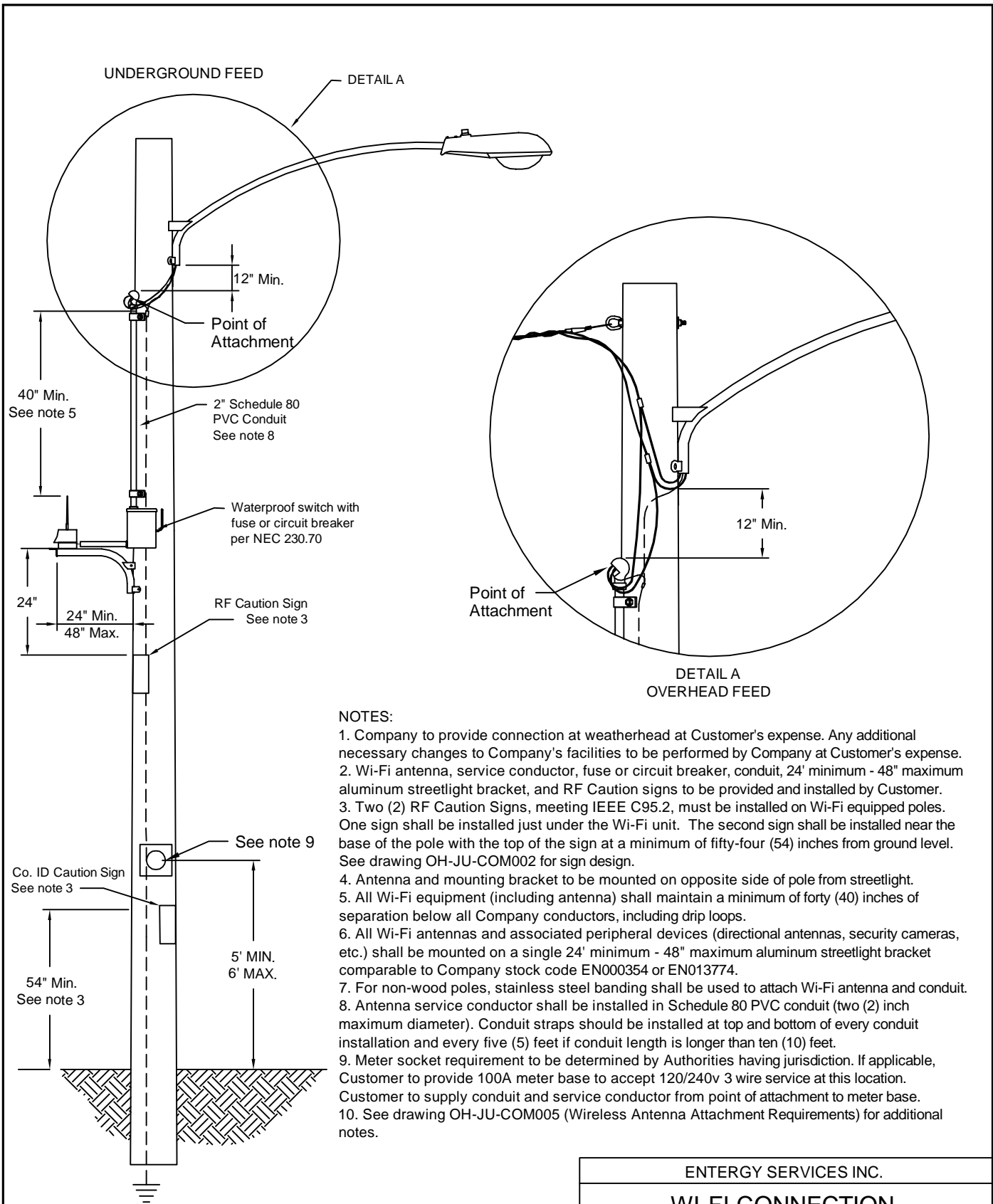


NOTES:

1. Only clean, tangent, non-equipment poles will be considered for antenna attachments.
2. Company to provide connections at weatherhead at Customer's expense. Any additional necessary changes to Company's facilities to be performed by Company at Customer's expense.
3. Wi-Fi antenna, conduit, service conductor, fuse or circuit breaker, 24" minimum - 48" maximum aluminum streetlight bracket, and RF Caution signs to be provided and installed by Customer.
4. Two (2) RF Caution Signs, meeting IEEE C95.2, must be installed on Wi-Fi equipped poles. One sign shall be installed just under the Wi-Fi unit. The second sign shall be installed near the base of the pole with the top of the sign at a minimum of fifty-four (54) inches from ground level. See drawing OH-JU-COM002 for sign design.
5. Antenna and mounting bracket to be mounted on Field Side of pole.
6. All Wi-Fi equipment (including antenna) shall maintain a minimum of forty (40) inches of separation below all Company conductors, including drip loops.
7. All Wi-Fi antennas and associated peripheral devices (directional antennas, security cameras, etc.) shall be mounted on a single 24" minimum - 48" maximum aluminum streetlight bracket comparable to Company stock code EN000354 or EN013774 (see table on drawing OH-JU-COM005 for more information).
8. For non-wood poles, stainless steel banding shall be used to attach Wi-Fi antenna and conduit.
9. Antenna service conductor shall be installed in Schedule 80 PVC conduit (two (2) inch maximum diameter). Conduit straps should be installed at top and bottom of every conduit installation and every five (5) feet if conduit length is longer than ten (10) feet.
10. Meter socket requirement to be determined by Authorities having jurisdiction. If applicable, Customer to provide 100A meter base to accept 120/240v 3 wire service at this location. Customer to supply conduit and service conductor from point of attachment to meter base.
11. See drawing OH-JU-COM005 (Wireless Antenna Attachment Requirements) for additional notes.

ENERGY SERVICES INC.	
WI-FI CONNECTION ON JOINT USE DISTRIBUTION POLES	
APPROVED BY: JRH	DATE: 03-05-07
CHECKED BY: CRG	SCALE: NONE
DRAWN BY: DAT	CEA NO. 00000
No. OH-JU-COM003	
Entergy	
PLOT 1=32	SH. 1 OF 1

NO.	DATE:	REVISION	BY:	APPR:
3	12/14/16	General review and updates on drawing.	ERG	JRH
2	2/17/15	Revised Drawing numbers and references.	KJM	JRH
1	5/31/07	Added 48" maximum for streetlight bracket in note 7	DAT	JRH



NOTES:

1. Company to provide connection at weatherhead at Customer's expense. Any additional necessary changes to Company's facilities to be performed by Company at Customer's expense.
2. Wi-Fi antenna, service conductor, fuse or circuit breaker, conduit, 24' minimum - 48" maximum aluminum streetlight bracket, and RF Caution signs to be provided and installed by Customer.
3. Two (2) RF Caution Signs, meeting IEEE C95.2, must be installed on Wi-Fi equipped poles. One sign shall be installed just under the Wi-Fi unit. The second sign shall be installed near the base of the pole with the top of the sign at a minimum of fifty-four (54) inches from ground level. See drawing OH-JU-COM002 for sign design.
4. Antenna and mounting bracket to be mounted on opposite side of pole from streetlight.
5. All Wi-Fi equipment (including antenna) shall maintain a minimum of forty (40) inches of separation below all Company conductors, including drip loops.
6. All Wi-Fi antennas and associated peripheral devices (directional antennas, security cameras, etc.) shall be mounted on a single 24' minimum - 48" maximum aluminum streetlight bracket comparable to Company stock code EN000354 or EN013774.
7. For non-wood poles, stainless steel banding shall be used to attach Wi-Fi antenna and conduit.
8. Antenna service conductor shall be installed in Schedule 80 PVC conduit (two (2) inch maximum diameter). Conduit straps should be installed at top and bottom of every conduit installation and every five (5) feet if conduit length is longer than ten (10) feet.
9. Meter socket requirement to be determined by Authorities having jurisdiction. If applicable, Customer to provide 100A meter base to accept 120/240v 3 wire service at this location. Customer to supply conduit and service conductor from point of attachment to meter base.
10. See drawing OH-JU-COM005 (Wireless Antenna Attachment Requirements) for additional notes.

ENERGY SERVICES INC.			
WI-FI CONNECTION ON TYPICAL STREET LIGHT POLE			
APPROVED BY: JRH		DATE: 03-05-07	
CHECKED BY: CRG		SCALE: NONE	
DRAWN BY: DAT		CEA NO. 00000	
Entergy		No. OH-JU-COM004	
PLOT 1=32		SH. 1 OF 1	

NO.	DATE:	REVISION	BY:	APPR:
3	12/14/16	General review and updates on drawing.	ERG	JRH
2	2/17/15	Revised Drawing numbers and references.	KJM	JRH
1	5/31/07	Changed note 7 to include WI-FI & added 48" max streetlight bracket	DAT	JRH

Wireless Antenna Attachment Requirements

(Applicable to drawings OH-JU-COM001, OH-JU-COM002, OH-JU-COM003, OH-JU-COM004 & OH-JU-COM006)

A. General:

1. All requirements and notes contained in this document pertain to the attachment of Wi-Fi and Cellular antennas to Company owned facilities. Municipal owned facilities or poles owned by communication companies do not apply. Please contact Company to verify facility ownership.
2. Equipment specifications for each type of proposed wireless device shall be evaluated and approved by Company.
3. All pole locations shall be evaluated and approved by Company prior to antenna installation. All applicable pole attachment contracts shall be executed and approved before antennas will be allowed to attach.
4. Antennas shall be attached to truck accessible poles only.
5. Only one wireless antenna device shall be allowed per pole. Placement of devices shall not interfere with Company personnel's ability to access and maintain its facilities.
6. Two (2) Caution signs shall be provided by and installed by equipment owner at each wireless antenna attachment location. Please refer to drawings for details.
7. The bottom of any equipment mounted on a pole must meet NESC guidelines for ground clearance (NESC Rule 232B). Mounted equipment requires a clearance from the bottom of the equipment of 15' above roads, streets.
8. Wireless devices attached to Company facilities shall not contain or be connected to back-up batteries.
9. Any work performed on behalf of Customer shall be performed by a qualified, Company approved contractor.
10. Company reserves the right to disconnect electric service to any wireless antenna at any time if established safe approach distances can not be maintained while work is being performed.
11. Antenna installations must meet NEC grounding and bonding requirements.

B. Wi-Fi Antennas:

1. All Wi-Fi antennas shall transmit in the 2.4 GHz - 5.8 GHz frequency band.
2. All Wi-Fi antennas shall meet IEEE 802.11x standards.
3. EIRP (Equivalent Isotropically Radiated Power) shall not exceed 36 dBm (4.0 W).
4. All Wi-Fi antennas and associated peripheral devices (directional antennas, security cameras, etc.) shall be mounted on a single 24" minimum - 48" maximum aluminum streetlight bracket comparable to Company stock code EN000354 or EN013774 (see below table for bracket ordering information).

C. Cellular Antennas:


Please see notes on drawing OH-JU-COM006

24" Bracket Purchasing Information (EN000354)		
Company	Catalog #	Contact Info
American Electric	91-2401-GL	Ruffin & Assoc 1- 800-445-1992
Utility Metals	M125S020GX	Wesco (337) 294-9132
SALCo	WP-125-2-S	Eric Aertker (504) 469-0136
Maclean Power Sys	S-125-2G	Heith McClendon 985-875-9955

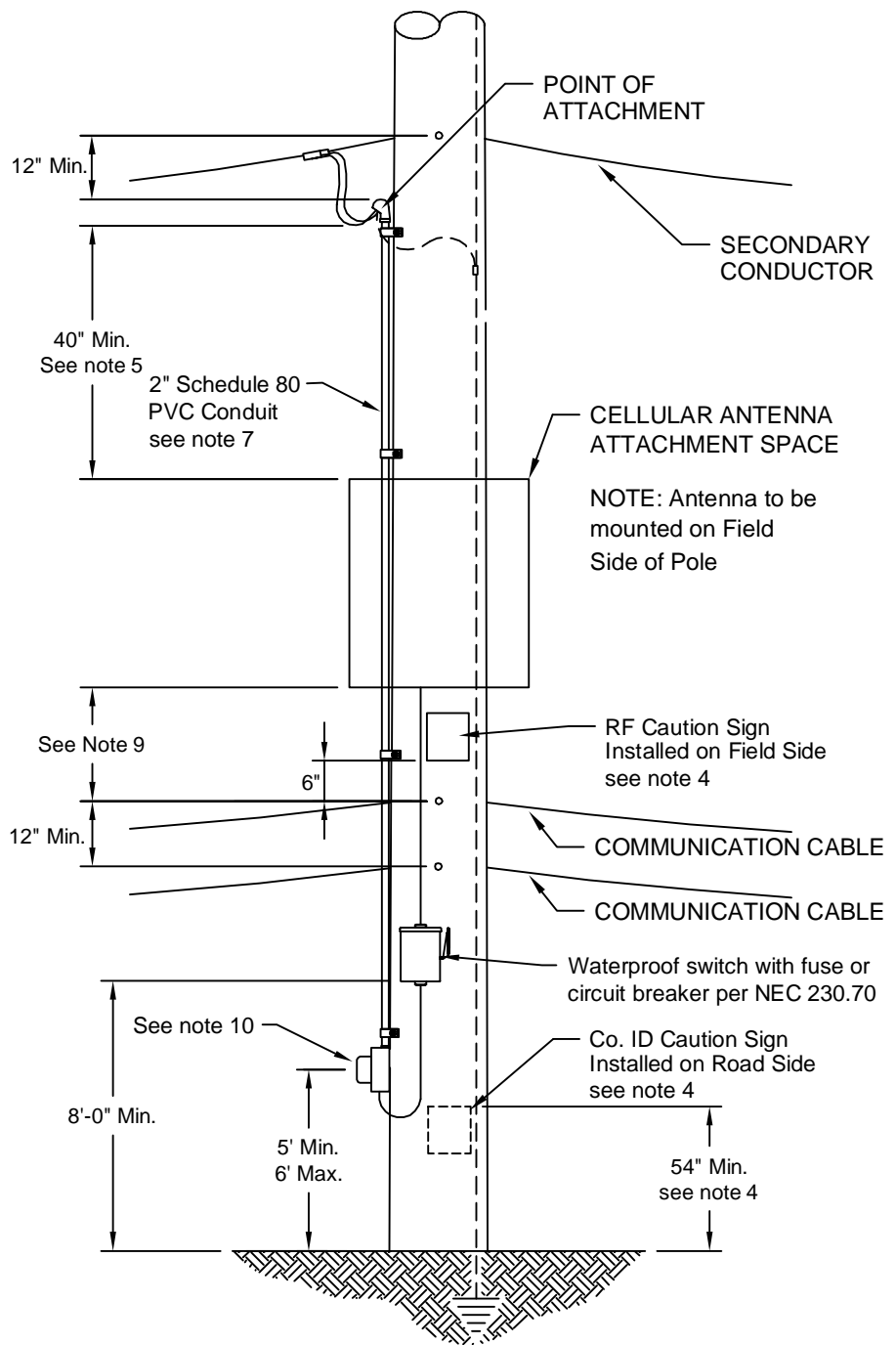
48" Bracket Purchasing Information (EN013774)		
Company	Catalog #	Contact Info
Maclean Power Sys	S-125-4G	Heith McClendon 985-875-9955
Utility Metals	P125S040	Wesco (337) 294-9132
SALCo	WP-125-4-S	Eric Aertker (504) 469-0136

ENERGY SERVICES INC.	
WIRELESS ANTENNA ATTACHMENT REQUIREMENTS	
APPROVED BY: JRH	DATE: 03-05-07
CHECKED BY: CRG	SCALE: NONE
DRAWN BY: DAT	CEA NO. 00000

3	12/14/16	General review and updates on drawing.	ERG	JRH
2	2/17/15	Revised Drawing numbers and references.	KJM	JRH
1	5/10/07	Added 48" bracket purchasing information to table and to note B. 4.	DAT	JRH
NO.	DATE:	REVISION	BY:	APPR:

 Entergy		No. OH-JU-COM005	
PLOT	1=32	SH.	1 OF 1

Field Side



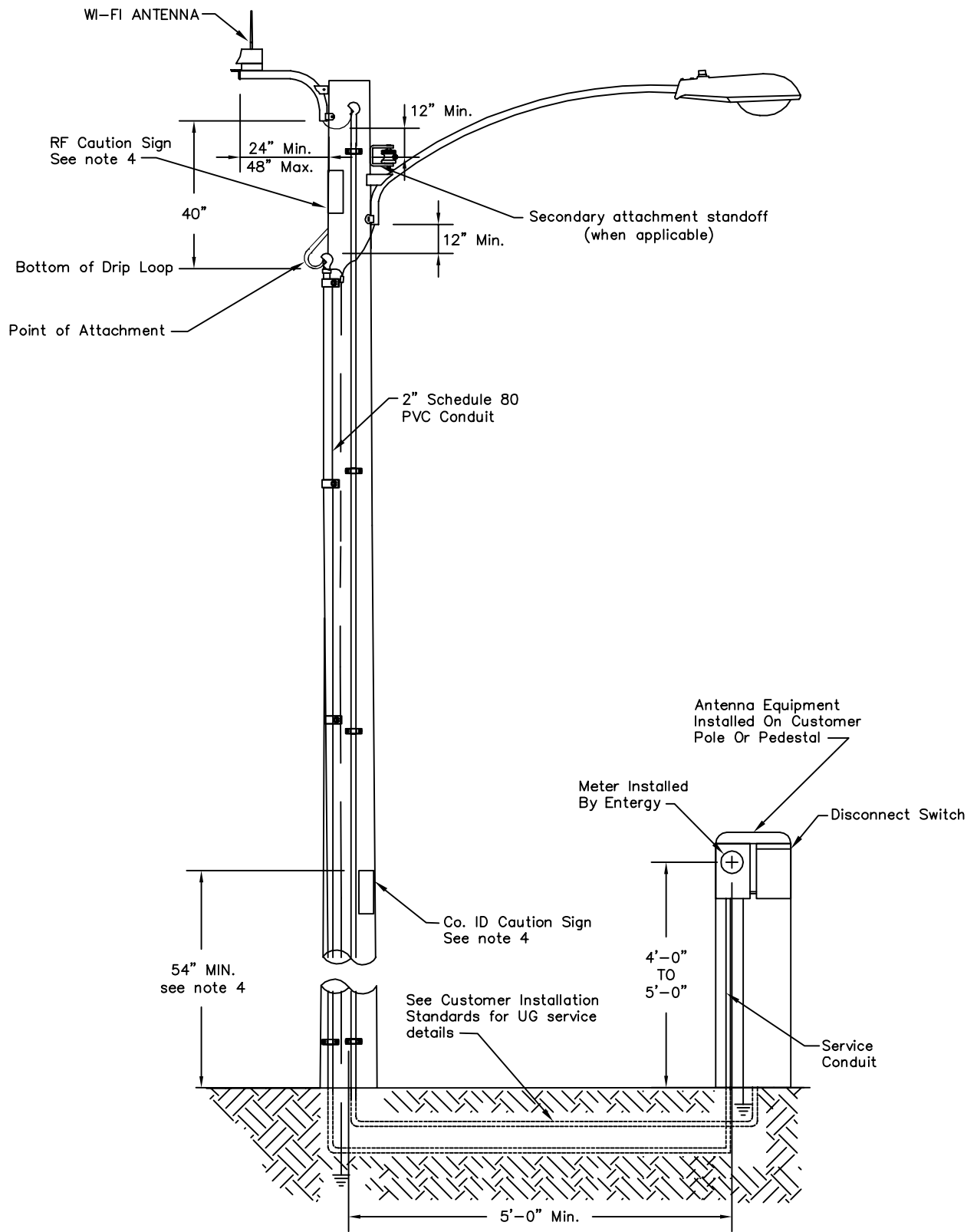
NOTES:

1. Only clean, tangent, non-equipment poles will be considered for antenna attachments.
2. Company to supply and install connection between Company secondary cable and Customer's service riser. Any additional necessary changes to Company's facilities to be performed by Company at Customer's expense.
3. Cellular antenna, mounting bracket, circuit breaker or fuse box, conduit, weather head, service conductors, and RF Caution signs to be provided and installed by Customer.
4. Two (2) RF Caution Signs, meeting IEEE C95.2, must be installed on cellular antenna equipped poles. One sign shall be installed just under the cellular antenna unit. The second sign shall be installed near the base of the pole with the top of the sign at a minimum of fifty-four (54) inches from ground level. See drawing OH-JU-COM005 for sign design.
5. All equipment (including antenna) shall maintain a minimum of forty (40) inches of separation below all Company conductors, including drip loops.
6. For non-wood poles, banding shall be used to attach cellular antenna and conduit.
7. Antenna communication cable shall be installed in Schedule 80 PVC conduit (two (2) inch maximum diameter). Conduit straps should be installed at top and bottom of every conduit installation and every five (5) feet if conduit length is longer than ten (10) feet.
8. 60 ft. maximum pole height.
9. Minimum separation between uppermost communication cable and antenna shall be based on the manufacturer's Minimum Approach Distance for the antenna configuration installed, multiplied by a safety factor of 3.
10. Meter socket requirement to be determined by Authorities having jurisdiction. If applicable, Customer to provide 100A meter base to accept 120/240v 3 wire service at this location. Customer to supply conduit and service conductor from point of attachment to meter base.
11. See drawing OH-JU-COM002 (Wireless Antenna Attachment Requirements) for additional notes.

ENERGY SERVICES INC.			
CELLULAR CONNECTION ON JOINT USE DISTRIBUTION POLES			
APPROVED BY:	JRH	DATE:	03-05-07
CHECKED BY:	CRG	SCALE:	NONE
DRAWN BY:	DAT	CEA NO.	00000
No. OH-JU-COM006			
PLOT 1=32		SH. 1 OF 1	

2	12/14/16	General review and updates on drawing.	ERG	JRH
1	2/17/15	Revised Drawing numbers, references and note 9 and dimension.	KJM	JRH
NO.	DATE:	REVISION	BY:	APPR:





NOTES:

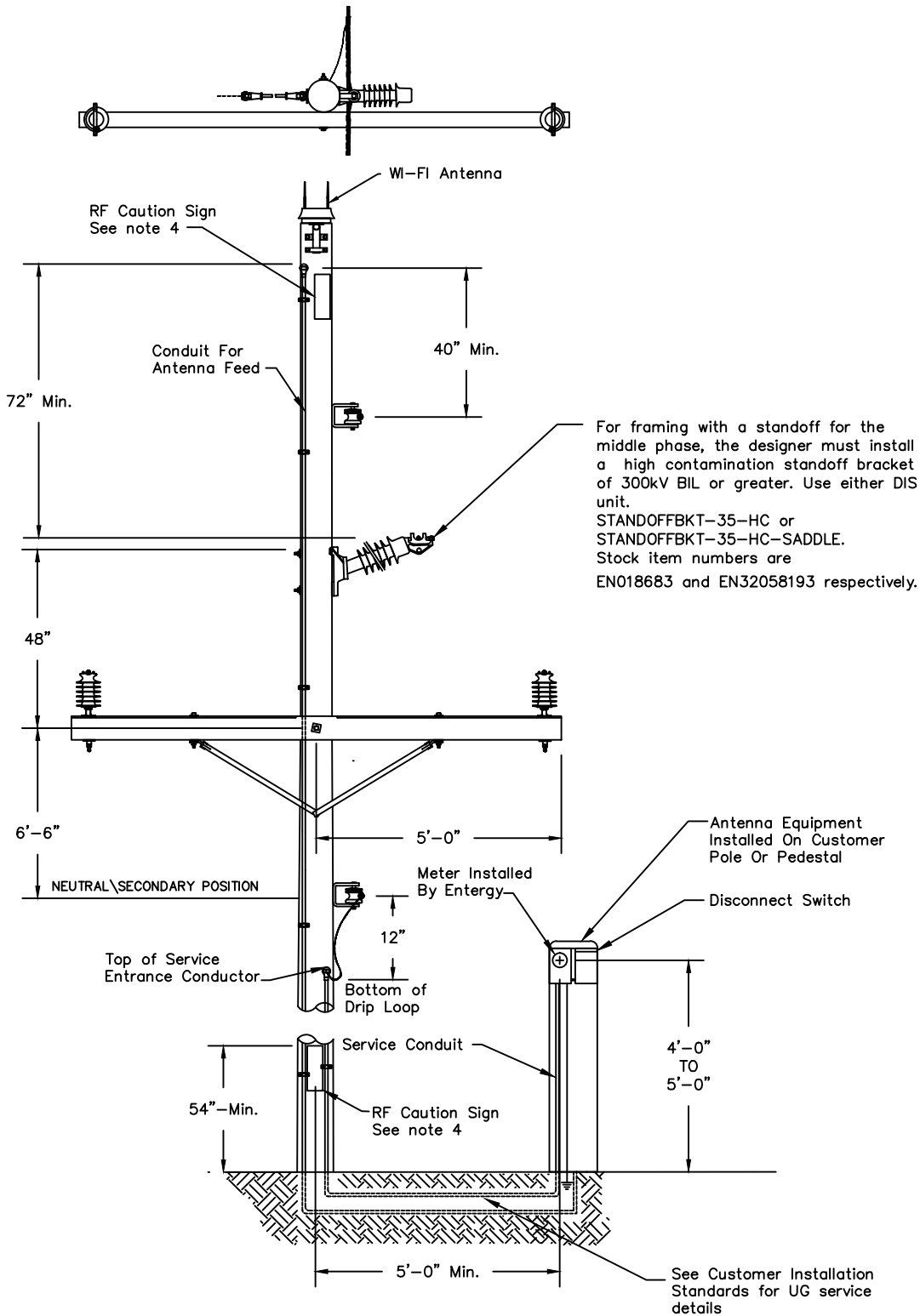
1. ANTENNA MUST BE INSTALLED BY AN APPROVED CONTRACTOR QUALIFIED TO WORK IN THE SUPPLY SPACE.
2. POLE LOCATIONS MUST BE APPROVED BY ENTERGY. **DO NOT** INSTALL ANTENNA ON EQUIPMENT POLES SUCH AS CAPACITOR BANKS, RECLOSERS, SWITCHES, U.G. RISERS, ETC. POLE LOCATION MUST BE BUCKET TRUCK ACCESSIBLE.
3. ONLY ONE ANTENNA PER POLE ALLOWED.
4. TWO (2) RF CAUTION SIGNS, MEETING IEEE C95.2, MUST BE INSTALLED ON CELLULAR ANTENNA EQUIPPED POLES. ONE SIGN SHALL BE INSTALLED JUST UNDER THE CELLULAR ANTENNA UNIT. THE SECOND SIGN SHALL BE INSTALLED NEAR THE BASE OF THE POLE WITH THE TOP OF THE SIGN AT A MINIMUM OF FIFTY-FOUR (54) INCHES FROM THE GROUND LEVEL. SEE DRAWING OH-JU-COM005 FOR SIGN DESIGN.
5. A MINIMUM CLASS 3 POLE IS REQUIRED. POLE HEIGHTS EXCEEDING 60' ABOVE GROUND ARE NOT ALLOWED.
6. ALL ANTENNA DESIGNS MUST BE APPROVED BY ENTERGY.
7. THE ONLY ANTENNA EQUIPMENT PERMITTED ON THE POLE IS THE ANTENNA AND THE CABLE FEEDING THE ANTENNA.
8. ALL ANTENNAS AND ANCILLARY EQUIPMENT SHALL BE LABELED WITH THE OWNER'S NAME AND CONTACT INFORMATION, INCLUDING AN EMERGENCY CONTACT NUMBER.
9. ANTENNA LOCATIONS CANNOT VIOLATE EXISTING JOINT USE ALLOCATIONS OR AGREEMENTS WITH OTHER JOINT USE PARTIES.

ENTERGY SERVICES INC.
 Antenna Attachment to Company Owned
 Light/Service/Secondary Pole
 Pole Top Installation

APPROVED BY: JRH	DATE: 09-07-16
CHECKED BY: KJM	SCALE: NONE
DRAWN BY: ERG	CEA NO. 00000

No. OH-JU-COM007
 PLOT 1=1 SH. 1 OF 1

1	12/14/16	General review and updates on drawing.	ERG	JRH
NO.	DATE:	REVISION	BY:	APPR:



NOTES:

1. ANTENNA MUST BE INSTALLED BY AN APPROVED CONTRACTOR QUALIFIED TO WORK IN THE SUPPLY SPACE.
2. POLE LOCATIONS MUST BE APPROVED BY ENTERGY. DO NOT INSTALL ANTENNA ON EQUIPMENT POLES SUCH AS CAPACITOR BANKS, RECLOSERS, SWITCHES, U.G. RISERS, ETC. POLE LOCATION MUST BE BUCKET TRUCK ACCESSIBLE.
3. ONLY ONE ANTENNA PER POLE ALLOWED.
4. TWO (2) RF CAUTION SIGNS, MEETING IEEE C95.2, MUST BE INSTALLED ON CELLULAR ANTENNA EQUIPPED POLES. ONE SIGN SHALL BE INSTALLED JUST UNDER THE CELLULAR ANTENNA UNIT. THE SECOND SIGN SHALL BE INSTALLED NEAR THE BASE OF THE POLE WITH THE TOP OF THE SIGN AT A MINIMUM OF FIFTY-FOUR (54) INCHES FROM THE GROUND LEVEL. SEE DRAWING OH-JU-COM005 FOR SIGN DESIGN.
5. A MINIMUM CLASS 3 POLE IS REQUIRED. POLE HEIGHTS EXCEEDING 60' ABOVE GROUND ARE NOT ALLOWED.
6. ALL ANTENNA DESIGNS MUST BE APPROVED BY ENTERGY.
7. THE ONLY ANTENNA EQUIPMENT PERMITTED ON THE POLE IS THE ANTENNA AND THE CABLE FEEDING THE ANTENNA.
8. ALL ANTENNAS AND ANCILLARY EQUIPMENT SHALL BE LABELED WITH THE OWNER'S NAME AND CONTACT INFORMATION, INCLUDING AN EMERGENCY CONTACT NUMBER.
9. ANTENNA LOCATIONS CANNOT VIOLATE EXISTING JOINT USE ALLOCATIONS OR AGREEMENTS WITH OTHER JOINT USE PARTIES.

ENTERGY SERVICES, INC.	
WI-FI CONNECTION	
Antenna Systems Installed in Supply Space on Wood Primary Poles	
APPROVED BY: JRH	DATE: 09/06/16
CHECKED BY: KJM	SCALE: N.T.S.
DRAWN BY: ERG	
No. OH-JU-COM008	
PLOT 1=1	SH. 1 OF 1

1	12/14/16	General review and updates on drawing.	ERG	JRH
NO.	DATE:	REVISION	BY:	APPR: